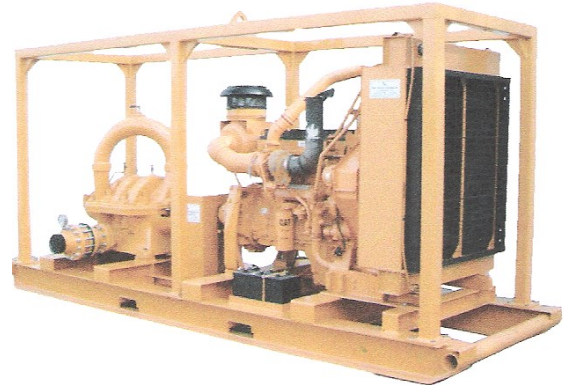


PRIME MARINE SERVICES, INC.

Peerless Pump

“NO ENGINE”



FEATURES

| | | | |
|----------------|--|---------------|-----------------|
| Type: | TUT - Horizontal Split Case Multi-Stage | Item : | 1 |
| Pump Model: | Peerless - 5TUT16N3-BrzImpOnly | Impeller No.: | 2692297/98 |
| Nom. Speed: | 1770 RPM, 60 Hz Electric | Fluid: | Water |
| Impeller Dia.: | 16.99 inch | Temperature: | 68 °F |
| Curve No.: | 2897413 | Viscosity: | 1.005 cP |
| Market : | Water | Sp. Gravity: | 1.000 |
| | | Your Ref. : | |

| | |
|-------------------|------------------------------|
| Duty Flow | 1000 US gpm |
| Duty Head | 825 ft |
| Imp. Dia. | 16.99 inch |
| Power Required | 287.8 hp |
| NPSH Required | 13.5 ft |
| Efficiency | 73.9 % |
| Peak Power | 332 hp |
| Closed Valve Head | 907.1 ft |
| Tolerance | Hyd Inst-Peerless Std |

Perf. curve represents typical perf, vel. head is incld. Perf. curves tests are performed in accordance with H.I.Stds.

| Flow (US gpm) | Head (ft) | Efficiency (%) | Power Required (hp) | NPSH Required (ft) |
|------------------|--------------|-------------------|------------------------|-----------------------|
| 374.9 | 913.4 | 49.8 | 173.8 | |
| 501.5 | 911.8 | 58.1 | 198.6 | 8.0 |
| 628.0 | 904.8 | 64.2 | 223.6 | 8.9 |
| 754.6 | 890.9 | 68.5 | 247.8 | 10.1 |
| 881.2 | 869.2 | 71.7 | 269.9 | 11.6 |
| 1007.7 | 839.4 | 74.0 | 288.8 | 13.6 |
| 1134.3 | 801.7 | 75.4 | 304.4 | 16.3 |
| 1260.9 | 756.6 | 75.8 | 317.8 | 20.0 |
| 1387.4 | 705.4 | 74.4 | 332.0 | 25.1 |

Prime Marine Services, Inc.
 312 S. Bernard Rd. Broussard, LA 70518
 Phone: (337) 837-6500 Toll Free: 877- 837-6511
www.primemarineinc.com

Sale Price \$29,500

This equipment is being sold without an Engine